

Finally, a place to call home!

Last Monday 11 residents with high physical support needs began moving into their very own apartment in Villawood, Sydney.

The specially designed apartments are part of a wider community of 71 residential apartments, allowing residents to integrate into a vibrant neighbourhood. The project – Ability Apartments Villawood – is the first integrated build for Ability SDA.

Many of the residents will be living independently for the first time and can only do so thanks to the onsite overnight support team which is accommodated in the building. Assistive technology will ensure they receive the support and care they need at any time of the day or night.

Ability SDA Co-directors Paul and Angie Simmons were elated to see the residents' joy as they entered their apartments. For five residents the move was even more significant as they previously had nowhere else to live but in hospitals.

As with all Ability SDA projects, the location of the site needed to be ideal – close to supermarkets, shops, restaurants, parks and public transport.

"It's a fabulous atmosphere with trendy shops popping up all around. There's even a medical centre, bakery and pizzeria downstairs," Angie said.

From the street, the building makes a sophisticated contribution to the gentrification of the area. The apartments are generously sized, with a fabulous layout for people in wheelchairs. Extra wide doorways and circulation spaces make manoeuvring a breeze for even the largest chairs. In the bedrooms, provision has been made for ceiling hoists to ensure safety for both residents and carers.

A sunny north-facing garden on Level 1 will become a cosy meeting place for friends and family but it's the rooftop terrace which is breathtaking. Spectacular views from the Blue Mountains to Centrepont are enhanced by artful landscaping which creates three distinct areas.

Like the rooftop, each sunny apartment benefits from a heightened vantage point, and residents will no doubt enjoy watching the hive of activity below.

For several, it's the technology they're most looking forward to. Automation begins at the front door and continues to the lift, their own door, the blinds, lights and air conditioning.

The long journey between applying for SDA through the NDIS to actually moving in has been well worth the effort, with new resident Atapo saying "I keep pinching myself, I can't believe this is really happening!"

Ability SDA has a number of projects underway including two in Gosford due for completion in July. Paul is keen to invite people to check their own eligibility for this type of accommodation.

"Many people think this is out of their reach, but for eligible residents the cost is subsidised by the NDIS, making it truly affordable."

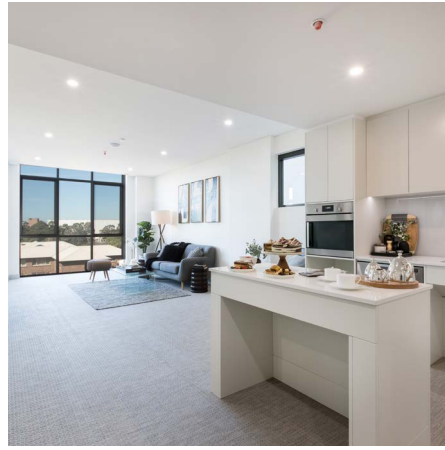
For more information visit www.abilitysda.com.au

ABOUT ABILITY SDA

Ability SDA builds large self-contained apartments that are well-located, safe, tech-savvy, affordable and completely accessible for people with a disability.

FOR MORE INFO:

annabel@abilitysda.com.au
0404 449 249
abilitysda.com.au



ABOVE: Resident Atapo Moore with Support Coordinator Erica Luiz (L) and partner Robyn Toi



Photos and video available at:
<https://drive.google.com/drive/u/0/folders/1iivVzUK8qJmfDktVajZAxEBVmydS9SgE>

